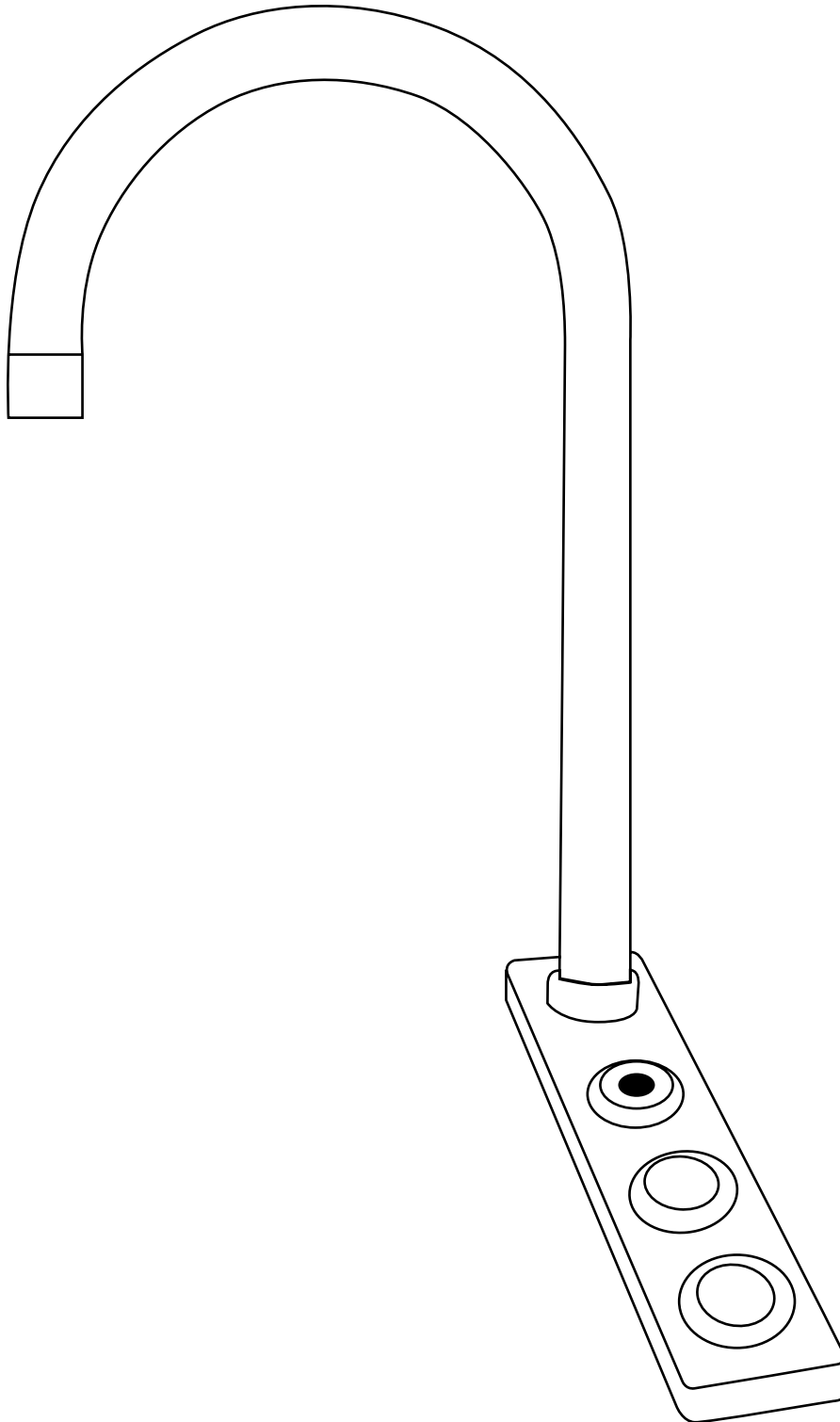


USER MANUAL

# QST/QSTD-553BCS

*-boiling, chilled and sparkling solutions*



BOILING



CHILLED



SPARKLING

**220V/50Hz**

CONTENTS

# QUATREAU SMART TAP USER MANUAL

## QST/QSTD Water Heater Control Unit CS20 Chiller Carbonator

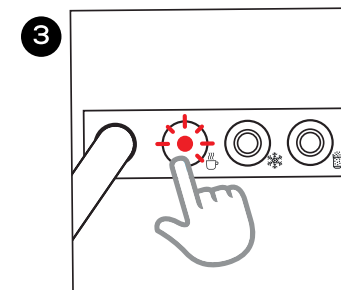
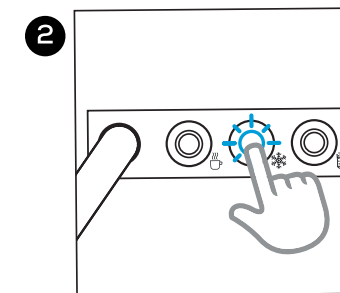
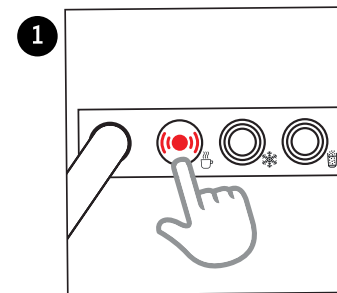
- [BOILING WATER WITH TOUCH SAFETY SEQUENCE](#) 1
- [CHILLED & SPARKLING WATER MECHANICAL BUTTON](#) 1
- [CHILLED & SPARKLING WATER DIGITAL BUTTON](#) 2
- [ADJUSTING CARBONATION](#) 3
- [CHANGING THE CO2 CANISTER](#) 3-4

### QUATREAU SMART TAP BOILING WATER WITH TOUCH SAFETY SEQUENCE

#### MECHANICAL BUTTON

For your safety and to prevent accidental use, the boiling function has a safety switch that needs to be released to activate the flow of boiling water.

1. Depress and hold boiling (red).
2. Depress and release the chilled button (blue).
3. Fill your cup, then release the boiling (red) button to stop.

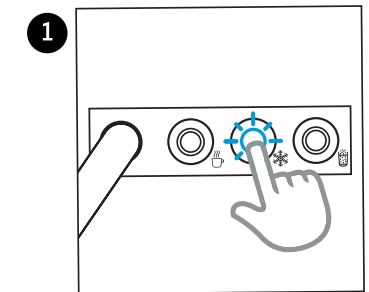


### QUATREAU SMART TAP CHILLED WATER AND SPARKLING WATER

#### MECHANICAL BUTTON

To activate chilled water, press and hold the middle button (snowflake icon).

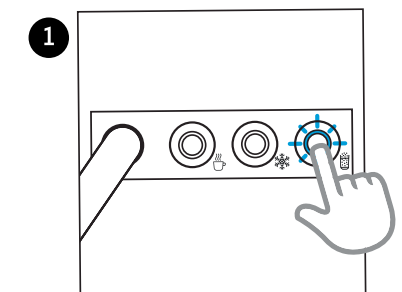
To turn this function off, release the middle button again (snowflake icon).



#### SPARKLING WATER

To activate sparkling water, press and hold the right button (glass icon).

To turn this function off, release the right button again (glass icon).

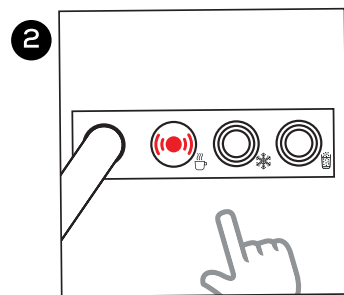
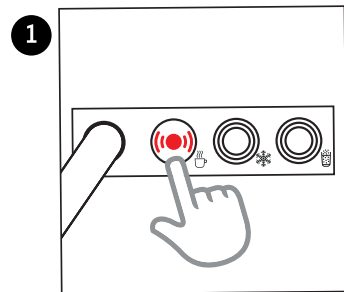


## QUATREAU SMART TAP BOILING WATER

### DIGITAL BUTTON

For your safety and to prevent accidental use, the boiling function has a safety switch that needs to be released to activate the flow of boiling water.

1. Press and release boiling (red).
2. Dispense hot water in 6 secs and automatically stop.
3. To turn this function off, press and release boiling (red) again. To end this function before the 6 second timer ends, press and release any button.



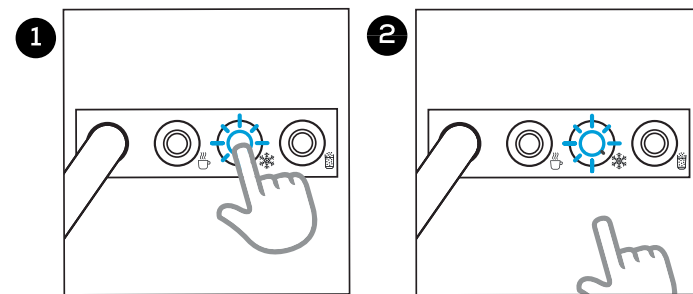
## QUATREAU SMART TAP CHILLED WATER AND SPARKLING WATER

### DIGITAL BUTTON

To activate chilled water:

1. Press and release chilled (middle blue button).
2. This will dispense chilled water for 6 seconds then automatically stop.

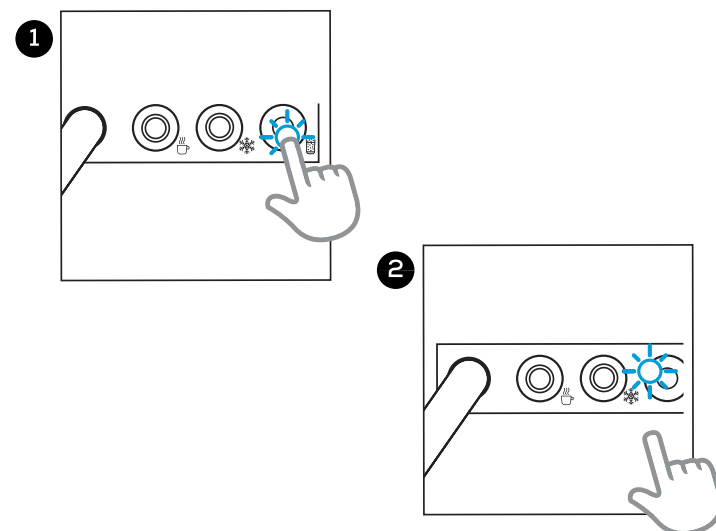
3. To end this function before the 6 second timer ends, press and release any button.



### SPARKLING WATER

To activate sparkling water

1. Press and release sparkling (Right Blue Button).
2. This will dispense Sparkling water for 6 seconds then automatically stop.
3. To end this function before the 6 second timer ends, press and release any button.



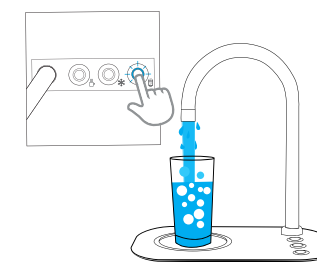
## TAP FUNCTIONS: ADJUSTING THE CARBONATION OF THE SPARKLING WATER



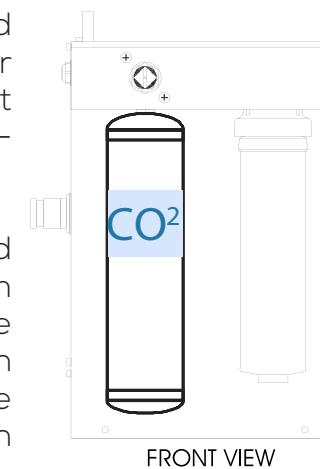
The CO<sub>2</sub> is controlled via the gas canister regulator on the front of the unit (see diagram).

Use a large flathead screwdriver or a 19mm spanner to increase the level of carbonation in the water. Turn the regulator by a half turn in a clockwise direction.

To decrease the level of carbonation, turn the regulator by a half turn in an counter-clockwise direction.



Between adjustments, you must run off several glasses of sparkling water to see the effects of the adjustment. If the sparkling function is spluttering, there is too much gas in the water. Reduce the setting by one full turn and try again.



FRONT VIEW

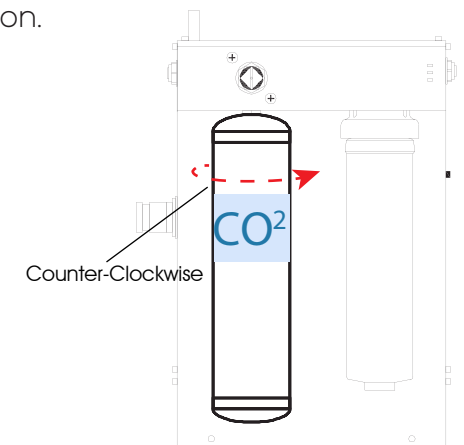
## TAP FUNCTIONS: SPARKLING WATER CHANGING THE CO<sub>2</sub> CANISTER

When the sparkling water tastes flat, it is necessary to change the gas canister.

The integral CO<sub>2</sub> gas canister is sited on the left-hand side at the front of the unit (see diagram opposite).

Please follow the instructions below to ensure your CO<sub>2</sub> canister is correctly installed:

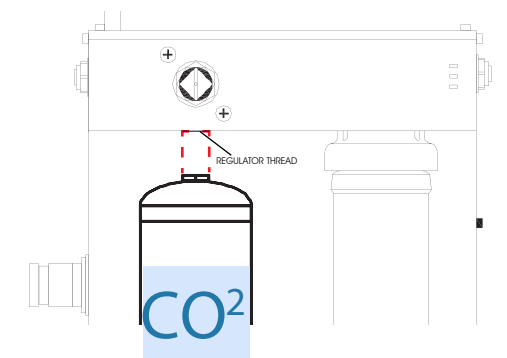
1. To remove a canister, unscrew in a counter-clockwise direction.



Counter-Clockwise

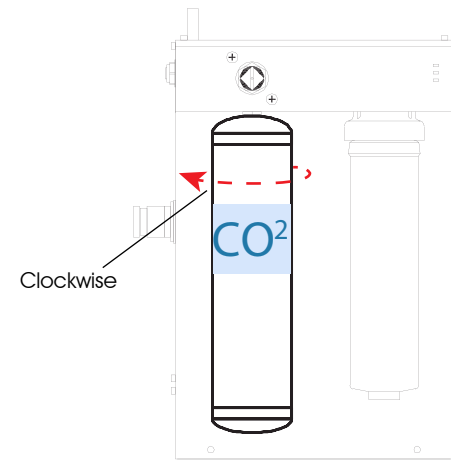
FRONT VIEW

2. Locate the thread on the regulator where the gas canister will connect.



3. Carefully present the canister, ensuring the canister is supported.

4. Rotate the canister in a clockwise direction, being careful not to cross thread the regulator. **\*\*see next page illustration.**



FRONT VIEW

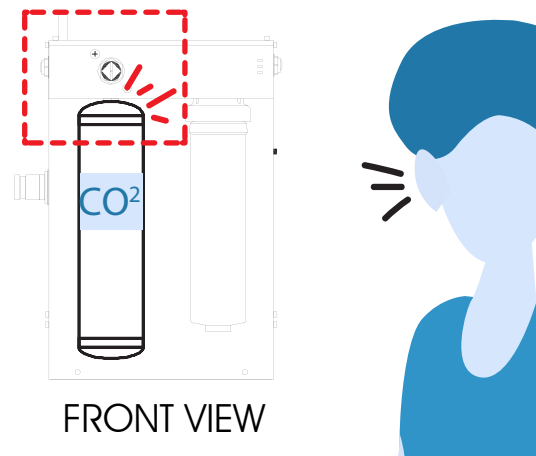
**NOTE:**

Check by listening that gas is not escaping.

The regulator has an internal opaque white-colored seal that should stay firmly in place. Older models have a black o-ring. If these are removed or fall out, the gas will escape.

The regulators have two crosshead screws attaching the regulator to the front panel. These are tightened during manufacture and should be checked periodically at service intervals, if they come loose gas will escape.

5. Rotate until you hear a hissing sound. This is the gas being released from the canister. It is important to keep screwing until you can no longer hear this hissing.



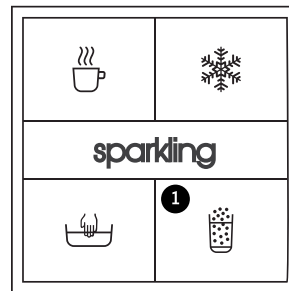
FRONT VIEW

6. When the canister cannot be turned further, it is safely connected. Do not turn the canister any further, as this will damage the regulator.

7. Press the glass icon button and runoff an amount of sparkling water to re-calibrate the system.

**NOTE:**

While removing a canister, it is important to support its weight to avoid the canister dropping on the floor.



When attaching a new gas canister, hand tighten the gas cylinder firmly but do not overtighten.

Distributed by: Global Water Solutions  
**Find out more at: [www.Quatreau.com](http://www.Quatreau.com)**